

AVERAGE WEEKLY EARNINGS

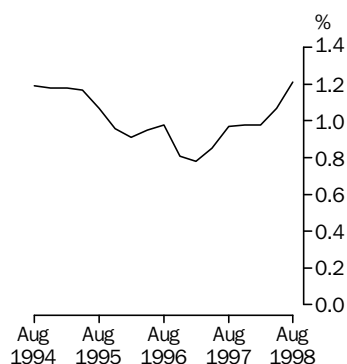
STATES AND
AUSTRALIA

EMBARGO: 11:30AM (CANBERRA TIME) THURS 19 NOV 1998

AUGUST 1998 KEY FIGURES

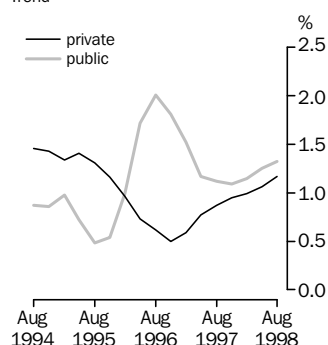
Quarterly percentage change

Full-time adult total earnings
Trend



Quarterly percentage change

Full-time adult total earnings
Trend



TREND ESTIMATES	August 98 \$	Quarterly % change	Annual % change
Australia			
Full-time adult ordinary time earnings	736.70	1.2	4.4
Full-time adult total earnings	778.10	1.2	4.3
All employees total earnings	602.90	0.7	3.0
Private sector			
Full-time adult ordinary time earnings	710.20	1.2	4.4
Full-time adult total earnings	754.30	1.2	4.2
Public sector			
Full-time adult ordinary time earnings	814.60	1.4	4.7
Full-time adult total earnings	848.60	1.3	4.9

SEASONALLY ADJUSTED ESTIMATES

Australia			
Full-time adult ordinary time earnings	738.40	1.8	4.2
Full-time adult total earnings	779.50	1.7	4.0
All employees total earnings	605.20	1.4	3.6
Private sector			
Full-time adult ordinary time earnings	711.30	1.5	4.1
Full-time adult total earnings	754.90	1.3	3.8
Public sector			
Full-time adult ordinary time earnings	816.70	2.1	4.7
Full-time adult total earnings	850.10	1.9	4.8

AUGUST 1998 KEY POINTS

TREND ESTIMATES

- Average earnings of all categories of employees have continued to grow during the three months to August 1998.
- Full-time adult ordinary time earnings for males and females both rose by 4.3% in the twelve months to August 1998.
- In the twelve months to August 1998, full-time adult total earnings for males and females rose by 4.3% and 4.0% respectively.
- Full-time adult ordinary time earnings for the private and public sectors rose by 4.4% and 4.7% respectively in the twelve months to August 1998.

TAKE CARE!
For effects of
compositional change
see page 2
NOTES ON ESTIMATES

- For further information about these and related statistics, contact Glynis Franklin-Orell on Perth 08 9360 5304 or any ABS office shown on the back of this publication.

NOTES

FORTHCOMING ISSUES

<i>REFERENCE PERIOD</i>	<i>EXPECTED RELEASE DATE</i>
November 1998	4 March 1999
February 1999	20 May 1999

RELATED ISSUES

Average Weekly Earnings, Australia, Preliminary (Cat. no. 6301.0)

<i>REFERENCE PERIOD</i>	<i>EXPECTED RELEASE DATE</i>
November 1998	11 February 1999
February 1999	29 April 1999

CHANGES IN THIS ISSUE

There are no changes in this issue.

NOTES ON ESTIMATES

Movements in average weekly earnings can be affected by both changes in the level of earnings per employee and changes in the composition of the labour force. For example, changes in the proportions of full-time, part-time, casual and junior employees and variations in the distribution of occupations can affect movements in earnings series. Refer to paragraphs 8 and 9 of the Explanatory Notes.

SAMPLING ERRORS

For information on sampling errors see the Technical Notes at the end of this publication. Standard errors for the original estimates contained in this publication are in tables A, B and C of the Technical Notes.

W. McLennan
Australian Statistician

C O N T E N T S

	page
EDITORIAL	
Notes	2
TABLES	
Average Weekly Earnings	
1 Australia: Trend	4
2 Australia: Seasonally Adjusted	5
3 Australia: Original	6
4 Private Sector, Australia: Trend	7
5 Private Sector, Australia: Seasonally Adjusted	8
6 Private Sector, Australia: Original	9
7 Public Sector, Australia: Trend	10
8 Public Sector, Australia: Seasonally Adjusted	11
9 Public Sector, Australia: Original	12
10 Industry, Australia: Original	13
11 States and Territories: Trend	14
12 States and Territories: Seasonally Adjusted	16
13 States and Territories: Original	18
14 Quarterly Percentage Change, States and Territories: Trend	20
15 Quarterly Percentage Change, States and Territories: Seasonally Adjusted ..	21
16 Quarterly Percentage Change, States and Territories: Original	22
17 Annual Percentage Change, States and Territories: Trend	23
ADDITIONAL INFORMATION	
Explanatory notes	24
Technical notes	28
Additional data available on request	32
Glossary	33



AVERAGE WEEKLY EARNINGS, Australia: **Trend**

Reference period	MALES.....			FEMALES.....			PERSONS.....		
	Full-time adult ordinary time earnings	Full-time adult total earnings	All males total earnings	Full-time adult ordinary time earnings	Full-time adult total earnings	All females total earnings	Full-time adult ordinary time earnings	Full-time adult total earnings	All employees total earnings
DOLLARS									
1997									
May	743.20	798.50	689.90	620.90	635.10	457.90	698.50	738.70	580.10
August	751.90	807.20	697.60	627.20	641.60	462.50	705.80	745.90	585.60
November	759.80	815.40	705.70	634.00	648.60	465.60	712.90	753.20	590.50
1998									
February	767.20	823.20	712.50	640.40	654.70	467.80	720.10	760.60	594.70
May	775.00	831.80	717.80	647.00	660.90	470.10	727.80	768.70	598.60
August	784.20	841.80	722.70	654.00	667.40	472.90	736.70	778.10	602.90
PERCENTAGE CHANGE (from previous quarter)									
1997									
May	1.1	1.0	0.8	0.9	0.8	0.9	1.0	0.8	0.8
August	1.2	1.1	1.1	1.0	1.0	1.0	1.0	1.0	0.9
November	1.0	1.0	1.2	1.1	1.1	0.7	1.0	1.0	0.8
1998									
February	1.0	1.0	1.0	1.0	0.9	0.5	1.0	1.0	0.7
May	1.0	1.0	0.7	1.0	0.9	0.5	1.1	1.1	0.7
August	1.2	1.2	0.7	1.1	1.0	0.6	1.2	1.2	0.7
PERCENTAGE CHANGE (from corresponding quarter of previous year)									
1996									
August	3.8	3.8	2.8	4.0	3.9	3.5	3.9	3.9	3.2
1997									
August	4.2	3.6	3.2	4.2	4.0	3.8	4.0	3.5	3.0
1998									
August	4.3	4.3	3.6	4.3	4.0	2.2	4.4	4.3	3.0

AVERAGE WEEKLY EARNINGS, Australia: **Seasonally Adjusted**

Reference period	MALES.....			FEMALES.....			PERSONS.....		
	Full-time adult ordinary time earnings	Full-time adult total earnings	All males total earnings	Full-time adult ordinary time earnings	Full-time adult total earnings	All females total earnings	Full-time adult ordinary time earnings	Full-time adult total earnings	All employees total earnings
DOLLARS									
1997									
May	739.80	795.10	688.50	619.40	633.80	457.00	695.50	735.90	578.30
August	755.40	811.70	695.90	628.60	643.00	461.70	708.80	749.50	584.40
November	758.00	812.40	708.20	633.30	648.10	468.20	711.30	751.00	593.60
1998									
February	768.80	825.20	713.00	641.10	655.40	467.10	721.20	761.90	593.80
May	772.20	829.10	715.90	646.00	659.60	467.90	725.60	766.80	596.60
August	786.20	843.60	724.00	654.80	668.30	475.30	738.40	779.50	605.20
PERCENTAGE CHANGE (from previous quarter)									
1997									
May	0.4	0.5	0.3	0.8	0.9	0.5	0.3	0.4	0.1
August	2.1	2.1	1.1	1.5	1.4	1.0	1.9	1.8	1.0
November	0.3	0.1	1.8	0.8	0.8	1.4	0.4	0.2	1.6
1998									
February	1.4	1.6	0.7	1.2	1.1	-0.2	1.4	1.4	0.0
May	0.4	0.5	0.4	0.8	0.6	0.2	0.6	0.6	0.5
August	1.8	1.7	1.1	1.4	1.3	1.6	1.8	1.7	1.4
PERCENTAGE CHANGE (from corresponding quarter of previous year)									
1996									
August	3.9	3.8	2.9	3.5	3.6	3.7	3.8	3.8	3.5
1997									
August	4.7	4.3	3.0	4.6	4.4	3.4	4.5	4.1	2.7
1998									
August	4.1	3.9	4.0	4.2	3.9	3.0	4.2	4.0	3.6

AVERAGE WEEKLY EARNINGS, Australia: **Original**

Reference period	MALES.....			FEMALES.....			PERSONS.....		
	Full-time adult ordinary time earnings	Full-time adult total earnings	All males total earnings	Full-time adult ordinary time earnings	Full-time adult total earnings	All females total earnings	Full-time adult ordinary time earnings	Full-time adult total earnings	All employees total earnings
DOLLARS									
1997									
May	740.70	795.80	687.10	620.30	634.80	457.40	696.60	736.80	577.80
August	753.60	808.00	693.80	626.90	641.20	460.20	706.60	746.10	582.20
November	757.70	815.50	709.30	633.20	648.30	466.10	711.30	753.20	592.70
1998									
February	770.00	825.10	715.60	642.00	656.00	470.10	722.30	762.10	597.40
May	773.20	829.90	714.50	646.90	660.60	468.30	726.90	767.80	596.20
August	784.30	839.60	721.80	653.10	666.50	473.80	736.10	776.00	602.90
PERCENTAGE CHANGE (from previous quarter)									
1997									
May	0.4	0.6	-0.2	0.8	0.9	-0.1	0.4	0.5	-0.6
August	1.7	1.5	1.0	1.1	1.0	0.6	1.4	1.3	0.8
November	0.5	0.9	2.2	1.0	1.1	1.3	0.7	0.9	1.8
1998									
February	1.6	1.2	0.9	1.4	1.2	0.9	1.5	1.2	0.8
May	0.4	0.6	-0.2	0.8	0.7	-0.4	0.6	0.8	-0.2
August	1.4	1.2	1.0	1.0	0.9	1.2	1.3	1.1	1.1
PERCENTAGE CHANGE (from corresponding quarter of previous year)									
1996									
August	3.9	3.7	2.9	3.5	3.6	3.6	3.8	3.7	3.4
1997									
August	4.7	4.3	3.0	4.6	4.4	3.4	4.4	4.0	2.7
1998									
August	4.1	3.9	4.0	4.2	3.9	3.0	4.2	4.0	3.6



AVERAGE WEEKLY EARNINGS, Private Sector—Australia: **Trend**

Reference period	MALES.....			FEMALES.....			PERSONS.....		
	Full-time adult ordinary time earnings	Full-time adult total earnings	All males total earnings	Full-time adult ordinary time earnings	Full-time adult total earnings	All females total earnings	Full-time adult ordinary time earnings	Full-time adult total earnings	All employees total earnings
DOLLARS									
1997									
May	722.60	781.10	660.80	580.10	595.70	413.90	673.60	717.40	547.30
August	731.00	789.00	667.80	586.00	601.50	418.20	680.40	723.60	552.00
November	738.60	796.60	675.60	592.80	608.10	421.00	687.50	730.50	556.40
1998									
February	745.90	804.00	682.10	599.40	614.30	422.30	694.80	737.70	560.10
May	753.50	812.40	686.80	605.70	620.10	423.20	702.10	745.50	563.00
August	762.30	822.10	690.70	611.80	625.80	424.30	710.20	754.30	566.00
PERCENTAGE CHANGE (from previous quarter)									
1997									
May	1.1	1.0	0.7	0.9	0.8	0.9	0.9	0.8	0.7
August	1.2	1.0	1.1	1.0	1.0	1.0	1.0	0.9	0.9
November	1.0	1.0	1.2	1.2	1.1	0.7	1.0	0.9	0.8
1998									
February	1.0	0.9	1.0	1.1	1.0	0.3	1.1	1.0	0.7
May	1.0	1.0	0.7	1.0	1.0	0.2	1.1	1.1	0.5
August	1.2	1.2	0.6	1.0	0.9	0.3	1.2	1.2	0.5
PERCENTAGE CHANGE (from corresponding quarter of previous year)									
1996									
August	3.3	3.2	2.6	3.8	3.9	4.2	3.5	3.5	3.5
1997									
August	3.9	3.1	2.8	3.8	3.6	3.7	3.5	2.8	2.6
1998									
August	4.3	4.2	3.4	4.4	4.0	1.5	4.4	4.2	2.5

AVERAGE WEEKLY EARNINGS, Private Sector—Australia: **Seasonally Adjusted**

Reference period	MALES.....			FEMALES.....			PERSONS.....		
	Full-time adult ordinary time earnings	Full-time adult total earnings	All males total earnings	Full-time adult ordinary time earnings	Full-time adult total earnings	All females total earnings	Full-time adult ordinary time earnings	Full-time adult total earnings	All employees total earnings
DOLLARS									
1997									
May	718.70	778.50	659.30	579.00	595.30	413.20	669.90	714.60	545.30
August	734.40	793.40	664.90	587.10	602.50	417.10	683.00	727.00	550.20
November	737.70	794.00	679.20	592.00	607.30	423.90	686.50	728.60	560.20
1998									
February	746.50	804.70	682.50	599.80	614.60	421.20	695.50	738.10	558.80
May	751.70	811.40	684.80	605.90	620.60	421.90	700.70	744.90	561.50
August	763.90	823.00	692.10	611.40	625.20	426.00	711.30	754.90	568.00
PERCENTAGE CHANGE (from previous quarter)									
1997									
May	0.2	0.6	0.0	0.7	1.0	0.6	-0.1	0.3	-0.3
August	2.2	1.9	0.9	1.4	1.2	0.9	2.0	1.7	0.9
November	0.4	0.1	2.2	0.8	0.8	1.6	0.5	0.2	1.8
1998									
February	1.2	1.3	0.5	1.3	1.2	-0.6	1.3	1.3	-0.2
May	0.7	0.8	0.3	1.0	1.0	0.2	0.8	0.9	0.5
August	1.6	1.4	1.1	0.9	0.7	1.0	1.5	1.3	1.1
PERCENTAGE CHANGE (from corresponding quarter of previous year)									
1996									
August	3.5	3.2	2.7	3.0	3.3	4.5	3.5	3.3	3.9
1997									
August	4.4	3.9	2.5	4.1	3.8	3.0	4.0	3.5	2.2
1998									
August	4.0	3.7	4.1	4.1	3.8	2.1	4.1	3.8	3.2

AVERAGE WEEKLY EARNINGS, Private Sector—Australia: **Original**

Reference period	MALES.....			FEMALES.....			PERSONS.....		
	Full-time adult ordinary time earnings	Full-time adult total earnings	All males total earnings	Full-time adult ordinary time earnings	Full-time adult total earnings	All females total earnings	Full-time adult ordinary time earnings	Full-time adult total earnings	All employees total earnings
DOLLARS									
1997									
May	718.30	776.30	656.80	578.20	593.70	412.70	670.00	713.40	543.70
August	733.00	790.60	663.50	586.50	601.80	417.50	681.80	724.70	549.10
November	736.90	797.10	681.30	592.80	609.30	421.90	686.30	731.20	560.30
1998									
February	749.10	806.50	684.40	600.40	614.90	423.20	696.70	739.00	561.30
May	751.30	809.30	682.30	605.00	619.00	421.40	700.90	743.70	559.90
August	762.40	820.10	690.50	610.80	624.50	426.50	710.00	752.50	566.80
PERCENTAGE CHANGE (from previous quarter)									
1997									
May	-0.2	0.1	-0.6	0.5	0.7	0.0	-0.2	0.0	-1.0
August	2.0	1.9	1.0	1.4	1.4	1.2	1.8	1.6	1.0
November	0.5	0.8	2.7	1.1	1.2	1.0	0.7	0.9	2.0
1998									
February	1.6	1.2	0.4	1.3	0.9	0.3	1.5	1.1	0.2
May	0.3	0.3	-0.3	0.8	0.7	-0.4	0.6	0.6	-0.3
August	1.5	1.3	1.2	1.0	0.9	1.2	1.3	1.2	1.2
PERCENTAGE CHANGE (from corresponding quarter of previous year)									
1996									
August	3.5	3.2	2.7	3.0	3.3	4.5	3.4	3.3	3.9
1997									
August	4.4	3.9	2.5	4.2	3.8	3.0	4.0	3.5	2.1
1998									
August	4.0	3.7	4.1	4.1	3.8	2.1	4.1	3.8	3.2

AVERAGE WEEKLY EARNINGS, Public Sector—Australia: **Trend**

Reference period	MALES.....			FEMALES.....			PERSONS.....		
	Full-time adult ordinary time earnings	Full-time adult total earnings	All males total earnings	Full-time adult ordinary time earnings	Full-time adult total earnings	All females total earnings	Full-time adult ordinary time earnings	Full-time adult total earnings	All employees total earnings
DOLLARS									
1997									
May	811.20	856.20	801.80	714.10	725.50	591.40	769.50	800.10	692.80
August	820.60	866.70	811.40	721.80	733.60	597.80	777.80	809.00	700.30
November	828.90	876.60	820.60	729.00	741.40	603.50	785.60	817.90	707.30
1998									
February	837.60	886.60	830.10	736.70	749.40	611.10	793.90	827.20	715.90
May	847.90	897.60	840.10	745.60	758.30	620.60	803.70	837.60	725.90
August	859.60	909.60	850.60	755.50	768.30	631.40	814.60	848.60	736.90
PERCENTAGE CHANGE (from previous quarter)									
1997									
May	1.2	1.2	1.2	1.2	1.2	1.3	1.2	1.2	1.2
August	1.2	1.2	1.2	1.1	1.1	1.1	1.1	1.1	1.1
November	1.0	1.1	1.1	1.0	1.1	1.0	1.0	1.1	1.0
1998									
February	1.0	1.1	1.2	1.0	1.1	1.3	1.1	1.1	1.2
May	1.2	1.2	1.2	1.2	1.2	1.6	1.2	1.2	1.4
August	1.4	1.3	1.2	1.3	1.3	1.8	1.4	1.3	1.5
PERCENTAGE CHANGE (from corresponding quarter of previous year)									
1996									
August	5.9	5.9	5.3	5.3	5.0	3.2	5.5	5.4	3.9
1997									
August	5.8	5.6	5.3	6.3	6.2	6.1	5.9	5.7	5.4
1998									
August	4.8	4.9	4.8	4.7	4.7	5.6	4.7	4.9	5.2



AVERAGE WEEKLY EARNINGS, Public Sector—Australia: **Seasonally Adjusted**

Reference period	MALES.....			FEMALES.....			PERSONS.....		
	Full-time adult ordinary time earnings	Full-time adult total earnings	All males total earnings	Full-time adult ordinary time earnings	Full-time adult total earnings	All females total earnings	Full-time adult ordinary time earnings	Full-time adult total earnings	All employees total earnings
DOLLARS									
1997									
May	811.40	855.60	801.20	714.00	725.10	591.70	769.80	799.80	693.10
August	823.30	868.90	814.10	723.70	735.70	597.60	780.10	811.10	701.30
November	825.50	874.40	817.70	725.90	737.90	602.70	782.10	814.50	705.50
1998									
February	840.20	888.10	831.30	740.00	753.50	613.00	796.90	830.50	717.30
May	844.70	895.50	839.80	741.70	753.90	616.00	800.30	834.50	723.60
August	861.80	911.10	850.50	757.90	770.60	635.30	816.70	850.10	738.80
PERCENTAGE CHANGE (from previous quarter)									
1997									
May	1.6	1.4	1.3	1.4	1.3	1.2	1.5	1.3	1.3
August	1.5	1.6	1.6	1.4	1.5	1.0	1.3	1.4	1.2
November	0.3	0.6	0.4	0.3	0.3	0.8	0.3	0.4	0.6
1998									
February	1.8	1.6	1.7	1.9	2.1	1.7	1.9	2.0	1.7
May	0.5	0.8	1.0	0.2	0.1	0.5	0.4	0.5	0.9
August	2.0	1.7	1.3	2.2	2.2	3.1	2.1	1.9	2.1
PERCENTAGE CHANGE (from corresponding quarter of previous year)									
1996									
August	5.8	5.8	5.4	5.4	5.2	2.9	5.5	5.4	3.8
1997									
August	6.1	5.8	5.5	6.5	6.5	6.2	6.1	5.9	5.6
1998									
August	4.7	4.9	4.5	4.7	4.7	6.3	4.7	4.8	5.4

AVERAGE WEEKLY EARNINGS, Public Sector—Australia: **Original**

Reference period	MALES.....			FEMALES.....			PERSONS.....		
	Full-time adult ordinary time earnings	Full-time adult total earnings	All males total earnings	Full-time adult ordinary time earnings	Full-time adult total earnings	All females total earnings	Full-time adult ordinary time earnings	Full-time adult total earnings	All employees total earnings
DOLLARS									
1997									
May	813.80	859.70	802.10	716.70	728.60	594.00	772.10	803.40	694.50
August	820.80	864.50	809.50	719.50	731.50	590.00	777.00	807.00	695.00
November	826.10	875.80	815.30	726.60	738.60	599.30	782.90	816.10	702.10
1998									
February	839.60	887.10	837.50	740.80	753.50	621.90	796.90	829.30	725.70
May	847.20	899.80	840.80	744.50	757.60	618.50	802.70	838.20	725.00
August	859.30	906.50	845.80	753.40	766.20	627.10	813.50	845.90	732.20
PERCENTAGE CHANGE (from previous quarter)									
1997									
May	2.0	2.0	0.7	1.7	1.8	0.2	1.8	1.9	0.3
August	0.9	0.6	0.9	0.4	0.4	-0.7	0.6	0.4	0.1
November	0.6	1.3	0.7	1.0	1.0	1.6	0.8	1.1	1.0
1998									
February	1.6	1.3	2.7	2.0	2.0	3.8	1.8	1.6	3.4
May	0.9	1.4	0.4	0.5	0.6	-0.5	0.7	1.1	-0.1
August	1.4	0.7	0.6	1.2	1.1	1.4	1.3	0.9	1.0
PERCENTAGE CHANGE (from corresponding quarter of previous year)									
1996									
August	5.8	5.8	5.4	5.4	5.1	2.8	5.5	5.4	3.7
1997									
August	6.1	5.9	5.6	6.5	6.5	6.2	6.1	5.9	5.6
1998									
August	4.7	4.9	4.5	4.7	4.7	6.3	4.7	4.8	5.4

AVERAGE WEEKLY EARNINGS, Industry—Australia: **Original**

Industry	MALES.....			FEMALES.....			PERSONS.....		
	Full-time adult ordinary time earnings	Full-time adult total earnings	All males total earnings	Full-time adult ordinary time earnings	Full-time adult total earnings	All females total earnings	Full-time adult ordinary time earnings	Full-time adult total earnings	All employees total earnings
DOLLARS									
Mining	1 232.10	1 331.40	1 306.60	886.90	905.20	848.30	1 195.50	1 286.30	1 253.80
Manufacturing	713.40	793.10	753.00	577.00	607.40	520.80	684.20	753.30	693.40
Electricity, gas and water supply	885.40	974.10	955.20	761.30	789.40	711.70	869.30	950.10	917.00
Construction	760.10	881.50	840.40	570.00	586.90	491.80	737.80	847.00	784.10
Wholesale trade	756.40	781.10	723.40	623.00	631.30	502.70	721.40	741.80	651.40
Retail trade	579.70	603.80	438.50	504.00	514.30	295.20	551.60	570.60	363.10
Accommodation, cafes and restaurants	577.20	592.50	422.50	518.10	525.20	297.40	554.10	566.20	352.10
Transport and storage	801.60	898.90	806.80	667.90	689.40	603.90	766.50	843.80	750.60
Communication services	859.70	950.60	914.70	744.50	771.20	662.70	827.10	899.80	830.80
Finance and insurance	1 130.70	1 142.40	1 104.50	690.30	705.70	598.10	899.30	913.00	801.40
Property and business services	871.90	917.00	738.70	642.40	653.20	493.80	771.20	801.20	617.90
Government administration and defence	808.10	835.60	801.70	722.00	732.80	618.30	775.80	797.10	721.50
Education	887.70	895.20	725.20	778.00	780.30	582.00	823.30	827.70	632.40
Health and community services	871.40	910.00	701.10	680.00	693.20	495.30	736.10	756.70	538.60
Cultural and recreational services	757.60	773.20	525.30	678.30	690.20	357.40	723.30	737.40	433.30
Personal and other services	799.50	837.60	720.00	631.40	648.70	415.70	739.20	769.80	556.10
All industries	784.30	839.60	721.80	653.10	666.50	473.80	736.10	776.00	602.90

PERCENTAGE CHANGE (from corresponding quarter of previous year)

Mining	6.5	3.0	3.1	12.5	11.4	13.2	7.1	3.8	4.1
Manufacturing	3.9	4.1	4.7	2.9	1.7	-0.1	3.7	3.7	3.6
Electricity, gas and water supply	6.6	9.6	8.9	11.4	11.2	11.6	7.3	10.0	9.5
Construction	4.9	7.4	13.2	-5.1	-3.8	1.3	4.3	7.0	12.1
Wholesale trade	8.7	8.5	7.7	5.9	6.0	2.6	7.9	7.8	5.9
Retail trade	0.4	0.8	4.6	1.4	1.5	3.6	1.2	1.6	5.2
Accommodation, cafes and restaurants	6.2	7.4	10.2	2.3	1.9	-0.6	4.6	5.3	4.0
Transport and storage	3.2	0.9	-1.0	5.2	4.7	0.3	2.6	0.2	-2.6
Communication services	3.7	4.0	3.7	3.4	3.5	4.1	3.6	4.0	3.9
Finance and insurance	1.4	1.3	3.8	2.3	2.3	4.9	0.9	0.8	3.5
Property and business services	7.9	7.6	6.8	6.9	7.0	2.0	8.9	9.0	5.9
Government administration and defence	5.4	5.0	4.8	6.2	6.2	4.9	5.7	5.5	5.0
Education	4.2	4.4	2.5	3.9	3.9	7.4	4.0	4.1	5.5
Health and community services	5.6	5.6	-0.5	4.0	3.8	4.1	4.1	3.9	2.8
Cultural and recreational services	-4.7	-5.8	3.2	-2.6	-3.6	-0.7	-3.7	-4.8	1.2
Personal and other services	6.2	6.0	6.4	10.1	8.8	-2.5	7.7	7.2	1.0
All industries	4.1	3.9	4.0	4.2	3.9	3.0	4.2	4.0	3.6

AVERAGE WEEKLY EARNINGS, States and Territories: **Trend**

Reference period	MALES.....			FEMALES.....			PERSONS.....		
	Full-time adult ordinary time earnings	Full-time adult total earnings	All males total earnings	Full-time adult ordinary time earnings	Full-time adult total earnings	All females total earnings	Full-time adult ordinary time earnings	Full-time adult total earnings	All employees total earnings
NEW SOUTH WALES									
1997									
May	772.00	827.80	711.40	646.20	660.10	480.50	724.30	764.10	600.50
August	779.80	836.40	717.00	652.20	665.80	483.40	731.10	771.30	603.90
November	786.90	843.70	723.70	658.10	671.80	485.90	737.60	777.90	607.90
1998									
February	793.30	850.40	730.40	663.40	677.50	486.80	743.70	784.40	611.20
May	799.50	857.90	736.00	669.80	684.40	487.60	750.40	792.30	614.10
August	806.50	866.80	740.80	677.20	692.00	488.90	757.90	801.30	616.90
VICTORIA									
1997									
May	735.10	795.60	687.00	619.50	637.00	458.00	696.70	739.30	583.00
August	742.60	803.50	698.80	626.20	644.70	463.00	704.80	746.60	590.60
November	750.30	813.60	709.20	631.60	649.80	466.30	710.90	755.40	597.80
1998									
February	758.40	820.00	711.60	636.90	653.30	469.30	716.00	761.10	601.10
May	766.90	824.80	710.30	644.00	658.60	473.30	722.70	765.80	602.50
August	775.80	829.50	710.00	652.90	665.70	478.90	732.00	770.90	605.40
QUEENSLAND									
1997									
May	698.70	752.60	659.80	589.60	603.40	443.90	659.40	698.40	559.90
August	706.80	762.20	669.10	595.70	610.50	453.70	665.80	706.50	569.00
November	716.60	771.60	678.40	604.50	618.80	460.60	674.30	714.00	575.70
1998									
February	728.20	781.90	690.50	612.00	625.00	462.30	684.20	722.50	581.80
May	738.40	792.40	702.60	615.90	628.30	460.50	692.70	731.10	587.20
August	748.50	803.60	714.10	616.10	628.50	456.60	700.10	740.10	592.10
SOUTH AUSTRALIA									
1997									
May	691.50	748.10	644.90	581.30	593.90	415.10	654.60	696.30	536.60
August	696.80	751.20	648.30	587.80	599.50	424.10	659.50	699.50	541.80
November	700.80	751.50	646.00	600.60	613.50	434.80	665.90	703.40	543.40
1998									
February	708.30	756.00	645.50	613.80	628.10	444.70	674.30	709.90	546.60
May	719.10	766.30	652.00	623.00	637.40	453.00	683.80	718.70	555.00
August	732.50	780.40	663.30	628.60	642.60	459.70	693.70	728.90	566.40

Reference period	MALES.....			FEMALES.....			PERSONS.....		
	Full-time adult ordinary time earnings	Full-time adult total earnings	All males total earnings	Full-time adult ordinary time earnings	Full-time adult total earnings	All females total earnings	Full-time adult ordinary time earnings	Full-time adult total earnings	All employees total earnings
WESTERN AUSTRALIA									
1997									
May	759.50	819.50	703.70	593.20	605.10	419.60	698.60	741.00	562.60
August	771.60	829.50	711.70	598.70	610.00	419.60	706.80	747.20	563.80
November	780.90	839.00	721.20	603.60	615.10	415.70	714.10	754.70	564.20
1998									
February	790.00	850.90	732.60	609.20	621.40	411.70	723.10	766.10	567.80
May	801.10	864.90	742.40	617.20	630.00	409.70	734.80	780.20	572.60
August	814.20	879.80	749.40	627.70	640.20	410.40	748.60	795.50	577.60
TASMANIA									
1997									
May	711.40	748.20	651.00	581.60	591.40	402.50	666.70	694.40	526.50
August	721.30	756.60	651.80	587.20	596.90	401.10	675.30	701.90	526.00
November	729.20	765.20	655.90	592.60	602.60	397.30	682.60	709.60	525.60
1998									
February	733.00	771.90	662.10	599.20	610.20	399.30	687.70	716.90	529.70
May	733.90	776.20	665.40	607.10	619.30	406.40	691.10	723.30	535.60
August	734.10	779.50	665.70	617.30	630.50	416.50	695.30	730.00	542.00
NORTHERN TERRITORY									
1997									
May	753.60	811.70	672.00	635.40	650.50	492.70	703.70	743.50	586.90
August	759.90	814.50	674.10	642.30	657.50	507.00	709.50	747.00	594.50
November	772.00	824.60	686.20	653.30	669.10	526.70	720.50	757.10	609.70
1998									
February	785.10	837.70	697.40	665.30	681.30	537.30	733.10	770.00	620.70
May	793.30	846.10	699.30	674.10	690.00	537.20	741.90	778.80	622.20
August	797.10	849.20	693.00	680.30	696.30	530.80	747.20	783.20	616.30
AUSTRALIAN CAPITAL TERRITORY									
1997									
May	850.70	881.20	771.30	723.60	731.20	570.60	796.20	817.00	672.10
August	856.30	888.00	778.60	738.50	746.70	580.00	806.60	828.10	680.20
November	871.10	903.10	794.00	751.40	761.10	591.10	821.30	843.90	693.80
1998									
February	890.20	921.70	812.50	759.70	769.40	599.70	835.90	858.60	708.50
May	907.70	939.00	829.10	767.40	776.40	606.00	848.90	871.20	720.70
August	923.20	956.50	843.60	777.00	785.10	613.10	861.20	884.40	732.40

AVERAGE WEEKLY EARNINGS, States and Territories: **Seasonally Adjusted**

Reference period	MALES.....			FEMALES.....			PERSONS.....		
	Full-time adult ordinary time earnings	Full-time adult total earnings	All males total earnings	Full-time adult ordinary time earnings	Full-time adult total earnings	All females total earnings	Full-time adult ordinary time earnings	Full-time adult total earnings	All employees total earnings
NEW SOUTH WALES									
1997									
May	769.20	825.80	710.90	645.40	660.30	479.80	722.60	763.40	599.90
August	779.70	837.60	713.20	653.90	667.20	481.60	731.70	772.80	600.70
November	789.30	846.10	729.40	658.20	671.50	490.80	738.80	778.50	613.60
1998									
February	793.80	848.40	727.30	663.10	677.30	484.30	744.10	783.60	608.30
May	795.50	856.00	736.60	668.10	683.30	486.00	747.20	790.40	613.20
August	810.10	869.90	741.80	679.20	693.50	491.60	760.90	803.80	619.20
VICTORIA									
1997									
May	734.40	790.20	676.60	616.50	634.30	453.70	690.70	733.60	572.80
August	759.30	812.30	704.80	629.90	648.80	466.60	713.30	753.00	595.40
November	746.60	806.30	709.00	631.70	650.30	465.40	706.50	752.40	598.50
1998									
February	761.50	823.70	717.70	634.10	650.60	470.00	716.50	761.90	604.10
May	765.00	826.40	701.80	644.00	657.70	470.10	721.20	766.80	596.20
August	776.20	825.90	714.30	654.70	668.50	482.00	733.60	769.40	609.40
QUEENSLAND									
1997									
May	694.60	750.80	660.50	593.80	607.50	445.70	658.70	698.20	560.70
August	708.20	761.60	664.40	589.90	605.00	445.70	664.50	705.10	563.90
November	713.10	771.50	681.50	605.50	621.30	468.70	673.10	714.90	580.80
1998									
February	733.30	784.90	689.90	614.60	625.60	462.90	686.40	723.10	580.60
May	735.40	787.30	701.40	617.90	630.50	456.40	693.10	729.00	585.20
August	748.80	807.20	715.80	612.40	625.80	459.30	698.60	742.00	594.50
SOUTH AUSTRALIA									
1997									
May	690.90	749.80	647.60	583.50	594.60	417.20	654.90	697.90	539.70
August	702.00	756.40	653.40	585.30	596.30	419.50	662.90	702.80	545.20
November	692.80	743.60	641.00	593.10	605.40	437.30	657.30	695.10	540.50
1998									
February	713.90	760.90	648.90	626.50	643.70	447.30	682.50	717.80	547.10
May	713.60	758.90	641.40	619.10	631.70	449.70	679.10	712.70	549.70
August	735.60	786.00	673.10	625.30	639.40	461.70	694.30	731.20	572.50

Reference period	MALES.....			FEMALES.....			PERSONS.....		
	Full-time adult ordinary time earnings	Full-time adult total earnings	All males total earnings	Full-time adult ordinary time earnings	Full-time adult total earnings	All females total earnings	Full-time adult ordinary time earnings	Full-time adult total earnings	All employees total earnings
WESTERN AUSTRALIA									
1997									
May	757.80	818.80	707.80	589.10	602.10	416.60	696.40	739.90	564.10
August	774.70	832.80	707.20	606.10	616.90	421.50	710.30	750.30	560.90
November	783.40	838.60	722.10	599.90	611.00	417.80	715.10	753.80	566.70
1998									
February	784.50	845.80	731.50	608.20	619.60	409.20	718.20	761.20	564.90
May	802.40	869.50	747.00	617.20	632.40	406.80	736.30	784.60	573.50
August	816.20	878.60	745.90	628.70	639.40	414.60	750.40	794.60	578.80
TASMANIA									
1997									
May	708.90	744.10	652.90	574.40	585.30	400.50	661.40	689.90	526.30
August	720.50	760.40	646.10	592.00	601.00	404.20	677.10	705.90	525.90
November	729.60	761.10	656.00	592.10	601.00	396.20	682.10	706.60	524.00
1998									
February	737.70	774.70	664.80	599.20	612.10	396.50	691.90	718.50	529.50
May	729.20	778.00	667.30	603.10	614.00	403.80	685.50	723.40	535.70
August	735.60	776.10	662.30	621.90	635.50	422.50	698.30	729.10	542.80
NORTHERN TERRITORY									
1997									
May	751.40	818.00	677.40	634.80	647.70	490.20	702.90	746.80	589.00
August	762.90	810.80	669.70	638.40	655.50	502.70	709.50	743.40	590.40
November	761.80	812.10	674.60	652.50	667.10	529.90	713.70	748.50	604.50
1998									
February	793.40	854.60	713.60	671.30	687.90	541.20	740.30	783.10	631.40
May	798.50	843.70	703.10	671.40	687.00	541.90	744.20	776.30	626.20
August	787.70	842.70	679.60	679.90	695.80	522.10	741.40	778.90	605.30
AUSTRALIAN CAPITAL TERRITORY									
1997									
May	847.70	874.60	766.90	717.90	723.20	562.10	791.00	808.40	665.00
August	857.10	890.70	781.20	742.30	749.80	582.20	808.00	830.50	681.50
November	866.30	898.50	789.20	753.70	766.60	591.50	821.60	844.30	691.80
1998									
February	895.80	928.80	816.90	760.10	768.60	605.60	838.20	862.80	714.20
May	907.10	934.30	830.10	762.10	770.10	597.00	846.00	865.30	716.60
August	922.00	957.70	841.20	781.80	791.20	618.70	863.40	887.90	733.30

AVERAGE WEEKLY EARNINGS, States and Territories: **Original**

Reference period	MALES.....			FEMALES.....			PERSONS.....		
	Full-time adult ordinary time earnings	Full-time adult total earnings	All males total earnings	Full-time adult ordinary time earnings	Full-time adult total earnings	All females total earnings	Full-time adult ordinary time earnings	Full-time adult total earnings	All employees total earnings
NEW SOUTH WALES									
1997									
May	768.10	824.40	708.50	645.20	659.00	481.80	721.70	762.00	599.60
August	780.50	835.30	715.40	653.60	667.40	482.50	732.20	771.40	602.10
November	788.30	848.40	728.90	656.50	670.30	487.20	737.40	779.60	611.10
1998									
February	795.30	850.00	727.90	665.20	679.60	484.90	745.90	785.30	609.60
May	794.30	854.50	734.30	667.90	681.80	488.00	746.20	788.80	613.00
August	810.90	867.50	744.00	679.00	693.90	492.70	761.50	802.50	620.60
VICTORIA									
1997									
May	736.90	789.10	676.20	618.50	636.70	453.90	693.90	733.80	572.70
August	754.20	812.70	695.20	625.80	643.40	460.40	708.10	751.90	587.20
November	748.50	807.60	714.90	632.90	653.10	463.60	708.10	753.60	600.60
1998									
February	762.20	823.10	722.00	634.90	650.70	477.70	716.80	761.60	610.40
May	767.60	825.30	701.50	646.30	660.40	470.40	724.80	767.00	596.30
August	770.90	826.30	704.30	650.20	662.70	475.60	728.00	768.20	600.90
QUEENSLAND									
1997									
May	697.60	753.30	662.30	591.90	605.60	447.50	659.10	699.60	561.70
August	702.60	755.70	660.00	591.20	606.40	447.80	661.70	700.90	562.80
November	716.70	776.80	685.00	607.60	622.90	464.20	675.60	718.80	580.90
1998									
February	732.20	783.20	689.10	612.90	624.50	463.10	686.30	722.20	580.50
May	738.60	789.90	703.10	616.10	628.70	458.50	693.50	730.50	586.30
August	742.90	800.90	711.30	613.50	627.00	461.50	695.60	737.40	593.30
SOUTH AUSTRALIA									
1997									
May	690.90	750.00	652.30	584.50	597.20	419.50	655.70	699.30	542.50
August	703.90	756.20	651.00	583.70	593.50	420.00	663.40	701.40	542.50
November	689.70	739.90	631.70	594.20	607.40	433.90	655.00	691.80	533.90
1998									
February	715.10	764.60	656.10	626.20	642.10	447.70	683.60	721.20	553.60
May	713.80	759.50	646.30	620.10	634.30	452.40	680.10	714.40	552.80
August	737.50	785.60	670.40	623.50	636.30	462.10	694.70	729.60	569.60

Reference period	MALES.....			FEMALES.....			PERSONS.....		
	Full-time adult ordinary time earnings	Full-time adult total earnings	All males total earnings	Full-time adult ordinary time earnings	Full-time adult total earnings	All females total earnings	Full-time adult ordinary time earnings	Full-time adult total earnings	All employees total earnings
WESTERN AUSTRALIA									
1997									
May	753.90	815.60	702.40	588.60	601.20	415.90	695.20	739.40	562.50
August	776.40	831.70	707.60	604.70	615.60	419.20	710.00	748.10	557.20
November	783.20	841.10	724.80	596.50	607.70	414.80	713.10	753.40	566.60
1998									
February	786.80	847.60	733.70	613.50	625.40	415.10	721.90	764.40	570.30
May	798.30	866.00	741.30	616.50	631.00	406.10	734.90	784.10	572.00
August	818.10	877.60	746.40	627.70	638.50	412.30	750.10	792.20	574.80
TASMANIA									
1997									
May	707.30	744.60	652.70	576.30	586.20	397.00	662.30	690.20	524.20
August	717.60	753.90	636.40	583.90	592.20	400.70	671.10	697.80	519.40
November	732.70	765.40	661.60	595.00	605.40	399.10	686.10	711.20	528.00
1998									
February	739.30	776.30	669.20	602.40	615.40	400.10	692.80	721.70	534.10
May	727.60	778.60	667.20	605.20	615.20	400.40	686.60	723.90	533.60
August	732.50	769.30	652.20	613.40	626.20	418.90	692.00	720.60	536.10
NORTHERN TERRITORY									
1997									
May	749.60	820.70	678.40	632.20	646.10	487.30	700.30	747.30	588.10
August	763.50	813.10	671.30	639.20	656.60	506.70	710.00	745.70	592.30
November	760.60	812.90	673.30	654.40	668.30	527.10	714.40	750.00	603.50
1998									
February	795.80	848.20	711.90	671.40	687.40	543.30	741.80	778.50	631.40
May	796.50	846.60	704.40	668.60	685.20	538.50	741.30	776.90	625.20
August	788.40	845.10	681.10	680.60	696.90	526.30	742.00	781.30	607.20
AUSTRALIAN CAPITAL TERRITORY									
1997									
May	845.60	874.30	763.20	720.60	728.90	563.80	792.40	812.40	664.30
August	859.10	889.30	779.60	735.50	744.60	576.90	806.20	827.40	677.60
November	865.30	901.00	789.10	754.10	762.90	589.80	819.30	843.80	692.10
1998									
February	897.30	928.30	822.80	764.10	771.90	611.10	841.20	862.40	719.00
May	904.50	933.70	825.70	764.70	776.20	598.70	847.50	869.50	715.60
August	924.20	956.30	839.60	774.60	785.60	613.20	861.40	884.60	729.00

AVERAGE WEEKLY EARNINGS, Quarterly Percentage Change—States and Territories: **Trend**

Reference period	MALES.....			FEMALES.....			PERSONS.....		
	Full-time adult ordinary time earnings	Full-time adult total earnings	All males total earnings	Full-time adult ordinary time earnings	Full-time adult total earnings	All females total earnings	Full-time adult ordinary time earnings	Full-time adult total earnings	All employees total earnings
NEW SOUTH WALES									
1998									
February	0.8	0.8	0.9	0.8	0.8	0.2	0.8	0.8	0.5
May	0.8	0.9	0.8	1.0	1.0	0.2	0.9	1.0	0.5
August	0.9	1.0	0.7	1.1	1.1	0.3	1.0	1.1	0.5
VICTORIA									
1998									
February	1.1	0.8	0.3	0.8	0.5	0.7	0.7	0.8	0.6
May	1.1	0.6	-0.2	1.1	0.8	0.8	0.9	0.6	0.2
August	1.2	0.6	0.0	1.4	1.1	1.2	1.3	0.7	0.5
QUEENSLAND									
1998									
February	1.6	1.3	1.8	1.2	1.0	0.4	1.5	1.2	1.1
May	1.4	1.3	1.7	0.6	0.5	-0.4	1.2	1.2	0.9
August	1.4	1.4	1.6	0.0	0.0	-0.8	1.1	1.2	0.8
SOUTH AUSTRALIA									
1998									
February	1.1	0.6	-0.1	2.2	2.4	2.3	1.3	0.9	0.6
May	1.5	1.4	1.0	1.5	1.5	1.9	1.4	1.2	1.5
August	1.9	1.8	1.7	0.9	0.8	1.5	1.5	1.4	2.0
WESTERN AUSTRALIA									
1998									
February	1.2	1.4	1.6	0.9	1.0	-1.0	1.3	1.5	0.6
May	1.4	1.6	1.3	1.3	1.4	-0.5	1.6	1.8	0.9
August	1.6	1.7	0.9	1.7	1.6	0.2	1.9	2.0	0.9
TASMANIA									
1998									
February	0.5	0.9	0.9	1.1	1.3	0.5	0.7	1.0	0.8
May	0.1	0.6	0.5	1.3	1.5	1.8	0.5	0.9	1.1
August	0.0	0.4	0.0	1.7	1.8	2.5	0.6	0.9	1.2
NORTHERN TERRITORY									
1998									
February	1.7	1.6	1.6	1.8	1.8	2.0	1.8	1.7	1.8
May	1.0	1.0	0.3	1.3	1.3	0.0	1.2	1.1	0.2
August	0.5	0.4	-0.9	0.9	0.9	-1.2	0.7	0.6	-0.9
AUSTRALIAN CAPITAL TERRITORY									
1998									
February	2.2	2.1	2.3	1.1	1.1	1.5	1.8	1.7	2.1
May	2.0	1.9	2.0	1.0	0.9	1.1	1.6	1.5	1.7
August	1.7	1.9	1.7	1.2	1.1	1.2	1.5	1.5	1.6

Reference period	MALES.....			FEMALES.....			PERSONS.....		
	Full-time adult time earnings	Full-time ordinary adult total earnings	All males total earnings	Full-time adult time earnings	Full-time ordinary adult total earnings	All females total earnings	Full-time adult time earnings	Full-time ordinary adult total earnings	All employees total earnings
NEW SOUTH WALES									
1998									
February	0.6	0.3	-0.3	0.7	0.9	-1.3	0.7	0.7	-0.9
May	0.2	0.9	1.3	0.8	0.9	0.4	0.4	0.9	0.8
August	1.8	1.6	0.7	1.7	1.5	1.1	1.8	1.7	1.0
VICTORIA									
1998									
February	2.0	2.2	1.2	0.4	0.0	1.0	1.4	1.3	0.9
May	0.5	0.3	-2.2	1.6	1.1	0.0	0.7	0.6	-1.3
August	1.5	-0.1	1.8	1.7	1.6	2.5	1.7	0.3	2.2
QUEENSLAND									
1998									
February	2.8	1.7	1.2	1.5	0.7	-1.2	2.0	1.1	0.0
May	0.3	0.3	1.7	0.5	0.8	-1.4	1.0	0.8	0.8
August	1.8	2.5	2.1	-0.9	-0.7	0.6	0.8	1.8	1.6
SOUTH AUSTRALIA									
1998									
February	3.0	2.3	1.2	5.6	6.3	2.3	3.8	3.3	1.2
May	0.0	-0.3	-1.2	-1.2	-1.9	0.5	-0.5	-0.7	0.5
August	3.1	3.6	4.9	1.0	1.2	2.7	2.2	2.6	4.1
WESTERN AUSTRALIA									
1998									
February	0.1	0.9	1.3	1.4	1.4	-2.1	0.4	1.0	-0.3
May	2.3	2.8	2.1	1.5	2.1	-0.6	2.5	3.1	1.5
August	1.7	1.0	-0.1	1.9	1.1	1.9	1.9	1.3	0.9
TASMANIA									
1998									
February	1.1	1.8	1.3	1.2	1.9	0.1	1.4	1.7	1.0
May	-1.1	0.4	0.4	0.7	0.3	1.8	-0.9	0.7	1.2
August	0.9	-0.2	-0.8	3.1	3.5	4.6	1.9	0.8	1.3
NORTHERN TERRITORY									
1998									
February	4.1	5.2	5.8	2.9	3.1	2.1	3.7	4.6	4.5
May	0.6	-1.3	-1.5	0.0	-0.1	0.1	0.5	-0.9	-0.8
August	-1.4	-0.1	-3.3	1.3	1.3	-3.7	-0.4	0.3	-3.3
AUSTRALIAN CAPITAL TERRITORY									
1998									
February	3.4	3.4	3.5	0.8	0.3	2.4	2.0	2.2	3.2
May	1.3	0.6	1.6	0.3	0.2	-1.4	0.9	0.3	0.3
August	1.6	2.5	1.3	2.6	2.7	3.6	2.0	2.6	2.3

AVERAGE WEEKLY EARNINGS, Quarterly Percentage Change—States and Territories: **Original**

Reference period	MALES.....			FEMALES.....			PERSONS.....		
	Full-time adult ordinary time earnings	Full-time adult total earnings	All males total earnings	Full-time adult ordinary time earnings	Full-time adult total earnings	All females total earnings	Full-time adult ordinary time earnings	Full-time adult total earnings	All employees total earnings
NEW SOUTH WALES									
1998									
February	0.9	0.2	-0.1	1.3	1.4	-0.5	1.1	0.7	-0.3
May	-0.1	0.5	0.9	0.4	0.3	0.6	0.0	0.4	0.6
August	2.1	1.5	1.3	1.7	1.8	0.9	2.0	1.7	1.2
VICTORIA									
1998									
February	1.8	1.9	1.0	0.3	-0.4	3.0	1.2	1.1	1.6
May	0.7	0.3	-2.8	1.8	1.5	-1.5	1.1	0.7	-2.3
August	0.4	0.1	0.4	0.6	0.3	1.1	0.5	0.2	0.8
QUEENSLAND									
1998									
February	2.2	0.8	0.6	0.9	0.3	-0.3	1.6	0.5	-0.1
May	0.9	0.9	2.0	0.5	0.7	-1.0	1.0	1.2	1.0
August	0.6	1.4	1.2	-0.4	-0.3	0.7	0.3	0.9	1.2
SOUTH AUSTRALIA									
1998									
February	3.7	3.3	3.9	5.4	5.7	3.2	4.4	4.3	3.7
May	-0.2	-0.7	-1.5	-1.0	-1.2	1.0	-0.5	-0.9	-0.1
August	3.3	3.4	3.7	0.6	0.3	2.1	2.2	2.1	3.0
WESTERN AUSTRALIA									
1998									
February	0.5	0.8	1.2	2.8	2.9	0.1	1.2	1.5	0.7
May	1.5	2.2	1.0	0.5	0.9	-2.2	1.8	2.6	0.3
August	2.5	1.3	0.7	1.8	1.2	1.5	2.1	1.0	0.5
TASMANIA									
1998									
February	0.9	1.4	1.1	1.2	1.6	0.2	1.0	1.5	1.2
May	-1.6	0.3	-0.3	0.5	0.0	0.1	-0.9	0.3	-0.1
August	0.7	-1.2	-2.3	1.4	1.8	4.6	0.8	-0.5	0.5
NORTHERN TERRITORY									
1998									
February	4.6	4.3	5.7	2.6	2.9	3.1	3.8	3.8	4.6
May	0.1	-0.2	-1.0	-0.4	-0.3	-0.9	-0.1	-0.2	-1.0
August	-1.0	-0.2	-3.3	1.8	1.7	-2.3	0.1	0.6	-2.9
AUSTRALIAN CAPITAL TERRITORY									
1998									
February	3.7	3.0	4.3	1.3	1.2	3.6	2.7	2.2	3.9
May	0.8	0.6	0.4	0.1	0.6	-2.0	0.8	0.8	-0.5
August	2.2	2.4	1.7	1.3	1.2	2.4	1.6	1.7	1.9

AVERAGE WEEKLY EARNINGS, Annual Percentage Change—States and Territories: **Trend**

Reference period	MALES.....			FEMALES.....			PERSONS.....		
	Full-time adult ordinary time earnings	Full-time adult total earnings	All males total earnings	Full-time adult ordinary time earnings	Full-time adult total earnings	All females total earnings	Full-time adult ordinary time earnings	Full-time adult total earnings	All employees total earnings
NEW SOUTH WALES									
1996									
August	3.8	3.5	3.4	4.8	4.8	6.2	4.2	4.0	4.1
1997									
August	2.6	1.8	0.8	3.7	3.0	0.2	2.7	1.9	0.3
1998									
August	3.4	3.6	3.3	3.8	3.9	1.1	3.7	3.9	2.2
VICTORIA									
1996									
August	3.2	3.8	1.3	3.3	3.3	1.6	3.4	3.9	2.1
1997									
August	5.1	4.5	3.5	5.0	5.5	4.9	5.4	4.4	3.5
1998									
August	4.5	3.2	1.6	4.3	3.3	3.4	3.9	3.2	2.5
QUEENSLAND									
1996									
August	3.6	3.6	2.9	3.6	3.6	4.0	3.5	3.3	3.3
1997									
August	5.6	6.1	8.4	5.0	5.4	9.6	5.3	5.9	9.4
1998									
August	5.9	5.4	6.7	3.4	2.9	0.6	5.2	4.7	4.1
SOUTH AUSTRALIA									
1996									
August	4.2	5.1	4.6	1.2	1.6	-0.3	3.3	4.2	2.8
1997									
August	4.2	3.7	2.3	4.1	3.5	4.9	3.8	3.2	2.6
1998									
August	5.1	3.9	2.3	6.9	7.2	8.4	5.2	4.2	4.5
WESTERN AUSTRALIA									
1996									
August	4.2	3.6	2.5	5.1	4.7	1.9	4.3	3.7	1.3
1997									
August	3.3	2.9	3.3	2.6	2.4	1.6	2.7	2.3	2.0
1998									
August	5.5	6.1	5.3	4.8	5.0	-2.2	5.9	6.5	2.4
TASMANIA									
1996									
August	5.4	4.4	3.8	3.4	3.4	-0.1	4.7	4.0	1.2
1997									
August	7.2	6.5	3.2	3.4	3.0	2.6	5.9	5.4	3.0
1998									
August	1.8	3.0	2.1	5.1	5.6	3.8	3.0	4.0	3.1
NORTHERN TERRITORY									
1996									
August	3.4	3.2	0.3	1.7	1.4	1.5	2.6	2.4	1.0
1997									
August	4.7	2.3	0.0	4.9	5.1	7.3	4.5	2.9	2.9
1998									
August	4.9	4.3	2.8	5.9	5.9	4.7	5.3	4.9	3.7
AUSTRALIAN CAPITAL TERRITORY									
1996									
August	5.1	4.3	3.4	5.1	5.0	6.9	4.6	4.8	4.4
1997									
August	0.9	1.7	2.3	4.8	4.9	5.1	2.7	3.1	4.2
1998									
August	7.8	7.7	8.3	5.2	5.1	5.7	6.8	6.8	7.7

EXPLANATORY NOTES

INTRODUCTION

1 This publication contains final estimates of average weekly earnings for August 1998 based on information obtained from a sample survey of employers. Preliminary estimates were published in *Average Weekly Earnings, Australia, Preliminary* (Cat. no. 6301.0).

SCOPE

2 All wage and salary earners who received pay for the reference period are represented in the Survey of Average Weekly Earnings (AWE), except:

- members of the Australian permanent defence forces;
- employees of enterprises primarily engaged in agriculture, forestry and fishing;
- employees in private households employing staff;
- employees of overseas embassies, consulates, etc;
- employees based outside Australia; and
- employees on workers' compensation who are not paid through the payroll.

3 Also excluded are the following persons who are not regarded as employees for the purposes of this survey:

- casual employees who did not receive pay during the reference period;
- employees on leave without pay who did not receive pay during the reference period;
- employees on strike, or stood down, who did not receive pay during the reference period;
- directors who are not paid a salary;
- proprietors/partners of unincorporated businesses;
- self-employed persons such as subcontractors, owner/drivers, consultants ; and
- persons paid solely by commission without a retainer.

SURVEY DESIGN

4 A sample of approximately 5,000 employer units is selected from the ABS Business Register to ensure adequate State and industry representation. The sample is updated each quarter to reflect changes in the ABS register of businesses. These changes arise from the emergence of new businesses, takeovers and mergers, changes to industry classification, changes in the number of employees, and businesses which have ceased operations. Such updating of the register can contribute to changes in the estimates of average weekly earnings.

5 The statistical unit for the survey comprises all activities of an employer in a particular State or Territory. Each statistical unit is classified to an industry which reflects the predominant activity of the business in the State or Territory. The statistical units are stratified by State, sector, industry, employment size and an equal probability sample is selected from each stratum.

6 Since February 1992, survey data for a number of Commonwealth government and ACT government departments have been collected electronically. From November 1993, survey data for a number of Northern Territory government departments and agencies have also been collected electronically.

SURVEY DESIGN CHANGES

7 Prior to the August 1996 survey, in the small number of cases where a business had a significant number of employees in more than one industry, a separate statistical unit was created for each industry. This practice ceased from the August 1996 survey. This change in procedures had a minimal effect on the average weekly earnings estimates.

EXPLANATORY NOTES

NOTES ON ESTIMATES

8 Average weekly earnings statistics represent average gross (before tax) earnings of employees and do not relate to average award rates nor to the earnings of the 'average person'. Estimates of average weekly earnings are derived by dividing estimates of weekly total earnings by estimates of number of employees. Changes in the averages may be affected not only by changes in the level of earnings of employees but also by changes in the overall composition of the employed wage and salary earner segment of the labour force.

9 There are several aspects which can contribute to compositional changes, including variations over time in the proportions of full-time, part-time, casual and junior employees; variations in the occupational distribution within and across industries; variations in the distribution of employment between industries; and variations in the proportion of male and female employees. Such effects may apply differently within different States and Territories, and over time.

ROUNDING

10 Estimates of average weekly earnings are rounded to the nearest 10 cents.

11 Percentage changes are calculated on the actual values and may differ from calculations based on rounded estimates.

COMPARABILITY OF RESULTS

12 It is important to recognise that whilst average employee earnings can be derived from the Survey of Employment and Earnings (SEE) published in *Wage and Salary Earners, Australia* (Cat. no. 6248.0), these average earnings will not be comparable with those produced from the AWE Survey. The SEE collects the sum of employee earnings paid in all pay periods ending in a calendar quarter, including payments to employees which are excluded from the scope of the AWE survey such as retrospective pay, pay in advance, leave loadings and severance, termination and redundancy payments.

13 Whilst the quarterly earnings produced by the SEE are affected by the varying number of pay periods from quarter to quarter, the AWE results are unaffected because of the selection of a specified pay period in the middle of a quarter. The SEE earnings data are also more subject to seasonal variations, particularly in the December and March quarters, due to the incidence of holidays taken in January being paid in advance and the earnings being reported in December quarter figures.

HISTORICAL SERIES

14 The AWE series was introduced in August 1981 when it replaced the average weekly earnings series based principally on information from payroll tax returns. Revised estimates of average weekly earnings for the period August 1981 to November 1983 were included in *Average Weekly Earnings, States and Australia, March Quarter 1984* (Cat. no. 6302.0) published on 12 July 1984. Users who need a measure of the movement in earnings for a period which spans both the payroll tax based and employer survey series should refer to Table 3 in that publication which presents both series linked to a common index base (August 1981 = 100.0).

SEASONAL ADJUSTMENT

15 Seasonal adjustment is a means of removing the estimated effects of normal seasonal variation from the series so that the effects of other influences on the series can be more clearly recognised. Seasonal adjustment does not aim to remove the irregular or non-seasonal influences which may be present in any particular week. Influences that are volatile or unsystematic can still make it difficult to interpret the movement of the series even after adjustment for seasonal variation. This means that quarter-to-quarter movements of seasonally adjusted estimates may not be reliable indicators of trend behaviour.

16 The series have been seasonally adjusted from September 1983 and these historical series can be made available on request. The seasonal factors are reviewed annually to take account of each additional year's original data. The review takes place in time for the results to be incorporated in each February issue of this publication.

17 Details about the method of seasonal adjustment of these series are available on request.

EXPLANATORY NOTES

TREND ESTIMATES

18 The ABS considers that trend estimates provide a more reliable guide to the underlying direction of the data, and are more suitable than either the seasonally adjusted or original estimates for most business decisions and policy advice.

19 The trend estimates in this publication, obtained by dampening out the irregular component from the seasonally adjusted series, are calculated using a centred 7-term Henderson moving average of the seasonally adjusted series. Estimates for the three most recent quarters cannot be calculated using this centred average method; instead an asymmetric average is used. This can lead to revisions in the trend estimates for the last three quarters when data become available for later quarters. Revisions of trend estimates will also occur with revisions to the original data and re-estimation of seasonal adjustment factors.

20 If a series is highly volatile then the trend estimates will be subject to greater revision for the latest few quarters as new data become available. However, it is important to note that this does not make the trend series inferior to the seasonally adjusted or original series. In some cases the effect of the irregular component on overall movements will remain in the seasonally adjusted and the original estimates but not in the trend series.

21 For more information, see *A Guide to Interpreting Time Series – Monitoring ‘Trends’: an Overview* (Cat. no. 1348.0) or contact the Assistant Director, Time Series Analysis on Canberra 02 6252 6345.

22 Two feature articles which have appeared in the ABS monthly publication *Australian Economic Indicators* (Cat. no. 1350.0) may also be of interest:

- Picking Turning Points in the Economy (April 1991); and
- Smarter Data Use (March 1992)

FURTHER INFORMATION

23 Background information about the average weekly earnings series is provided in *Information Paper: New Statistical Series: Employment, Average Weekly Earnings, Job Vacancies and Overtime* (Cat. no. 6256.0) published 21 June 1984, copies of which are available on request.

RELATED PUBLICATIONS

24 Users may also wish to refer to the following publications, which are available from ABS Bookshops:

- *Average Weekly Earnings, Preliminary* (Cat. no. 6301.0)—issued quarterly
- *Average Weekly Earnings, Australia 1941–1990* (Cat. no. 6350.0)
- *Employee Earnings and Hours, Australia* (Cat. no. 6306.0)—issued biennially
- *Wage Cost Index, Australia* (Cat. no. 6345.0)—issued quarterly
- *Job Vacancies and Overtime, Australia* (Cat. no. 6354.0)—issued quarterly
- *Information Paper: New Statistical Series: Employment, Average Weekly Earnings, Job Vacancies and Overtime* (Cat. no. 6256.0)
- *Occasional Paper No 1986/1: Statistics on Wages, Earnings, Income and Labour Costs – A Guide to Their Concepts, Measurement and Usage*
- *Wage and Salary Earners, Australia* (Cat. no. 6248.0)—issued quarterly
- *Labour Force, Australia* (Cat. no. 6203.0)—issued monthly
- *Labour Force Projections, Australia 1992–2005* (Cat. no. 6260.0)
- *Weekly Earnings of Employees (Distribution), Australia* (Cat. no. 6310.0.40.001)—issued annually.

25 Current publications produced by the ABS are listed in the *Catalogue of Publications and Products, Australia* (Cat. no. 1101.0). The ABS also issues, on Tuesdays and Fridays, a *Release Advice* (Cat. no. 1105.0) which lists publications to be released in the next few days. The catalogue and release advice are available from any ABS office.

EXPLANATORY NOTES

UNPUBLISHED STATISTICS

26 In some cases, the ABS can also make available information which is not published. This information may be made available in one or more of the following forms: hardcopy, data tape, floppy disk and Internet Email. Generally, a charge is made for providing unpublished information. Details of additional data available are shown in Special Data Service on page 32 of this publication.

SYMBOLS AND OTHER USAGES

ABS	Australian Bureau of Statistics
ACT	Australian Capital Territory
ANZSIC	Australian and New Zealand Standard Industrial Classification
AWE	Average Weekly Earnings
AWOTE	Average Weekly Ordinary Time Earnings
SEE	Survey of Employment and Earnings

TECHNICAL NOTES

RELIABILITY OF ESTIMATES

1 As the estimates in this publication are based on information relating to a sample of employers, they are subject to sampling variability. That is, they may differ from the estimates that would have been produced if the information had been obtained from all employers. This difference, called *sampling error*, should not be confused with inaccuracy that may occur because of imperfections in reporting by respondents or in processing by the ABS. Such inaccuracy is referred to as *non-sampling error* and may occur in any enumeration whether it be a full count or a sample. Efforts have been made to reduce non-sampling error by careful design of questionnaires, detailed checking of returns and quality control of processing.

2 The sampling error associated with any estimate can be estimated from the sample results. One measure of sampling error is given by the *standard error* which indicates the degree to which an estimate may vary from the value which would have been obtained from a full enumeration (the 'true value'). There are about two chances in three that a sample estimate differs from the true value by less than one standard error, and about nineteen chances in twenty that the difference will be less than two standard errors.

3 An example of the use of a standard error is as follows. If the estimated average earnings was \$500.00 with a standard error of \$4.00, then there would be about two chances in three that a full enumeration would have given an estimate in the range \$496.00 to \$504.00 and about nineteen chances in twenty that it would be in the range \$492.00 to \$508.00.

4 An example of the use of a standard error for a quarterly change estimate is as follows. If the estimate of quarterly change between two quarters was \$1.50 and the standard error on this estimate was \$1.00, then there would be about two chances in three that a full enumeration would have given a quarterly change estimate in the range +\$0.50 to +\$2.50 and about nineteen chances in twenty that it would be in the range -\$0.50 to +\$3.50.

5 Quarterly movements in estimates of average weekly earnings are considered to be statistically significant where they exceed two standard errors.



AVERAGE WEEKLY EARNINGS, Standard Errors—States

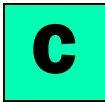
Reference period	MALES.....			FEMALES.....			PERSONS.....		
	<i>Full-time adult ordinary time earnings</i>	<i>Full-time adult total earnings</i>	<i>All males total earnings</i>	<i>Full-time adult ordinary time earnings</i>	<i>Full-time adult total earnings</i>	<i>All females total earnings</i>	<i>Full-time adult ordinary time earnings</i>	<i>Full-time adult total earnings</i>	<i>All employees total earnings</i>
LEVEL (\$)									
New South Wales	12.00	12.40	14.60	7.10	7.10	7.40	9.10	9.40	10.10
Victoria	16.50	17.10	18.40	9.90	10.10	11.90	12.50	13.10	13.80
Queensland	14.60	17.60	17.80	10.10	9.50	13.30	11.30	13.20	14.10
South Australia	12.30	14.70	19.40	11.50	12.10	12.00	10.00	11.50	13.00
Western Australia	13.90	15.20	17.80	9.20	9.40	15.60	10.80	11.80	16.00
Tasmania	17.30	17.50	16.30	13.20	13.30	11.80	14.60	14.50	12.60
Northern Territory	17.80	17.70	25.40	7.70	7.40	17.50	10.90	10.70	18.40
Australian Capital Territory	31.40	31.20	28.50	11.50	11.30	13.60	19.60	19.40	18.40
Australia	6.70	7.20	8.00	4.20	4.20	4.90	5.10	5.40	5.80

QUARTERLY MOVEMENT (\$)									
New South Wales	8.80	9.20	8.50	5.10	5.30	4.80	6.40	6.70	5.90
Victoria	10.30	10.40	10.20	5.70	5.70	7.80	7.40	7.60	8.20
Queensland	8.10	12.70	11.50	7.70	7.80	5.70	6.90	9.60	7.40
South Australia	9.80	12.30	13.60	9.20	9.00	8.00	8.00	9.50	9.10
Western Australia	10.20	12.10	12.40	6.70	7.00	7.70	7.50	9.00	8.60
Tasmania	12.30	12.20	14.60	8.40	8.20	8.60	9.70	9.30	9.80
Northern Territory	12.20	13.00	19.90	6.50	6.40	13.90	8.20	8.60	15.30
Australian Capital Territory	36.80	33.90	31.90	14.10	13.90	12.70	24.20	22.50	17.00
Australia	4.60	5.00	4.80	2.90	2.90	2.90	3.40	3.70	3.40



AVERAGE WEEKLY EARNINGS, Standard Errors—Sectors

Sector	MALES.....			FEMALES.....			PERSONS.....		
	<i>Full-time adult ordinary time earnings</i>	<i>Full-time adult total earnings</i>	<i>All males total earnings</i>	<i>Full-time adult ordinary time earnings</i>	<i>Full-time adult total earnings</i>	<i>All females total earnings</i>	<i>Full-time adult ordinary time earnings</i>	<i>Full-time adult total earnings</i>	<i>All employees total earnings</i>
LEVEL (\$)									
Private sector	8.60	9.10	9.80	5.70	5.70	6.00	6.70	7.10	7.10
Public sector	4.50	4.10	4.30	1.80	1.80	2.60	2.80	2.60	3.00
All sectors	6.70	7.20	8.00	4.20	4.20	4.90	5.10	5.40	5.80
QUARTERLY MOVEMENT (\$)									
Private sector	5.80	6.40	5.90	3.90	4.00	3.50	4.40	4.90	4.20
Public sector	2.90	2.60	4.00	1.40	1.40	2.10	1.90	1.70	2.70
All sectors	4.60	5.00	4.80	2.90	2.90	2.90	3.40	3.70	3.40



AVERAGE WEEKLY EARNINGS, Standard Errors—Industry

Industry	MALES.....			FEMALES.....			PERSONS.....		
	Full-time adult ordinary time earnings	Full-time adult total earnings	All males total earnings	Full-time adult ordinary time earnings	Full-time adult total earnings	All females total earnings	Full-time adult ordinary time earnings	Full-time adult total earnings	All employees total earnings
	LEVEL (\$)								
Mining	28.00	23.50	23.20	27.50	24.40	28.50	25.60	20.90	20.90
Manufacturing	14.40	14.30	14.20	17.70	17.10	13.80	13.60	13.60	13.20
Electricity, gas & water supply	11.50	15.20	15.90	10.50	10.60	12.90	10.30	13.60	14.50
Construction	26.20	34.70	35.50	35.80	38.70	29.10	23.60	32.20	33.50
Wholesale trade	23.70	22.80	24.60	16.40	16.20	19.50	20.40	19.80	21.70
Retail trade	11.10	11.50	11.70	9.10	9.30	7.80	8.80	9.10	9.10
Accommodation, cafes & restaurants	13.20	15.70	18.30	13.90	13.40	11.80	11.20	12.40	13.90
Transport & storage	36.10	41.70	51.40	17.00	20.10	36.60	28.90	33.90	46.50
Communication services	10.20	9.50	9.80	7.20	7.60	10.60	8.60	8.30	8.40
Finance & insurance	40.50	40.50	39.10	12.20	12.50	11.30	25.00	25.10	22.10
Property & business services	33.00	34.60	35.20	14.30	14.50	14.20	24.20	25.40	22.60
Government administration & defence	9.90	8.70	8.80	5.10	4.90	9.80	6.70	6.10	7.80
Education	5.10	4.90	10.40	3.80	3.80	6.00	3.90	3.90	5.90
Health & community services	29.40	29.90	47.30	12.70	13.00	13.30	13.80	14.20	15.70
Cultural and recreational services	37.50	38.60	82.60	22.90	23.20	55.70	26.60	27.10	47.70
Personal & other services	19.90	22.10	24.50	17.80	18.70	18.40	15.30	16.80	25.80
All industries	6.70	7.20	8.00	4.20	4.20	4.90	5.10	5.40	5.80

QUARTERLY MOVEMENT (\$)									
Mining	21.60	16.50	17.00	14.90	14.60	20.10	21.70	16.50	17.90
Manufacturing	9.80	9.70	9.40	11.50	11.30	10.20	8.90	9.00	8.90
Electricity, gas & water supply	10.90	14.20	14.80	15.00	13.30	13.40	9.60	12.70	13.60
Construction	16.10	32.10	30.40	22.00	22.60	21.90	16.20	30.20	27.60
Wholesale trade	15.40	15.20	16.30	13.20	13.00	23.90	13.70	13.60	18.50
Retail trade	9.30	9.10	6.90	5.90	5.90	3.90	6.60	6.30	4.60
Accommodation, cafes & restaurants	11.60	13.80	12.20	9.40	9.80	9.50	8.70	10.20	9.10
Transport & storage	17.40	15.00	22.40	9.70	10.40	27.70	14.30	13.10	23.00
Communication services	1.90	1.50	2.40	3.60	3.50	9.80	2.10	1.70	5.50
Finance & insurance	43.10	43.10	41.60	10.20	10.40	8.40	27.20	27.20	23.20
Property & business services	19.60	20.90	17.70	11.40	11.90	8.50	13.70	14.50	10.60
Government administration & defence	3.60	4.30	5.20	2.60	2.60	4.10	2.40	2.80	4.20
Education	3.70	3.70	6.10	2.30	2.20	6.70	2.40	2.40	5.20
Health & community services	25.90	25.60	21.40	7.40	7.80	6.60	9.00	9.10	7.30
Cultural and recreational services	22.60	23.20	36.40	20.00	19.50	19.80	16.70	17.20	23.00
Personal & other services	16.80	19.40	22.90	16.50	17.70	10.90	12.30	14.20	16.70
All industries	4.60	5.00	4.80	2.90	2.90	2.90	3.40	3.70	3.40

SPECIAL DATA SERVICE

INTRODUCTION

A large range of unpublished data are available from the Survey of Average Weekly Earnings on request. These data can be produced for clients as customised reports. The variables are listed below.

HOW TO PLACE AN ORDER

Firstly, determine the variables (see following) that you require estimates for. A covering letter indicating these requirements and the intended uses of the data requested should be addressed to:

Labour Statistics Centre
Output Group
Australian Bureau of Statistics
GPO Box K881
PERTH WA 6001

CONTACT OFFICER

If you wish to discuss individual requests, especially in regard to reliability of estimates for particular cross-classifications and the charges involved, please telephone Glynis Franklin-Orrrell on Perth 08 9360 5304.

VARIABLES

The following variables are available from this survey.

Note: The more variables included in any one tabulation the more likely it is that confidentiality provisions associated with the data will be invoked and some data suppressed.

Type of estimate	Original Seasonally adjusted Trend
Composition of earnings	Full-time adult ordinary time earnings Full-time adult total earnings All employees total earnings
States and Territories	New South Wales Victoria Queensland South Australia Western Australia Tasmania Northern Territory Australian Capital Territory
Sector	Private sector Public sector
Sex	Males Females Persons
Industry (ANZSIC classification)	ANZSIC Division (1-digit code) —as shown in table 10 ANZSIC Sub-division (2-digit code) ANZSIC Group (3-digit code) ANZSIC Class (4-digit code)

G L O S S A R Y

.....

Adult employees	Adult employees are those employees 21 years of age or over and those employees who, although under 21 years of age, are paid at the full adult rate for their occupation.
Average Weekly Earnings	Average Weekly Earnings statistics represent average gross (before tax) earnings of employees and do not relate to average award rates nor to the earnings of the 'average person'. Estimates of average weekly earnings are derived by dividing estimates of weekly total earnings by estimates of number of employees.
Employees	Employees refer to all wage and salary earners (as defined in paragraphs 2 and 3 of the Explanatory Notes) who received pay for any part of the reference period.
Full-time employees	Full-time employees are permanent, temporary and casual employees who normally work the agreed or award hours for a full-time employee in their occupation and received pay for any part of the reference period. If agreed or award hours do not apply, employees are regarded as full-time if they ordinarily work 35 hours or more per week.
Reference period	Reference period for the survey refers to the last pay period ending on or before the third Friday of the middle month of the quarter. Where a pay period is fortnightly or monthly, etc., the employer is requested to report only one week's proportion. The reference date for the current survey is 21 August 1998.
Sector	Public sector includes all local government authorities and government departments, agencies and authorities created by, or reporting to the Commonwealth and State Parliaments. All remaining employees are classified as private sector.
Weekly ordinary time earnings	Weekly ordinary time earnings refers to one week's earnings of employees for the reference period attributable to award, standard or agreed hours of work. It is calculated before taxation and any other deductions (e.g. superannuation, board and lodging) have been made. Included in ordinary time earnings are award, workplace and enterprise bargaining payments, and other agreed base rates of pay, over award and overagreed payments, penalty payments, shift and other allowances; commissions and retainers; bonuses and similar payments related to the reference period; payments under incentive or piecework; payments under profit sharing schemes normally paid each pay period; payment for leave taken during the reference period; all workers' compensation payments made through the payroll; and salary payments made to directors. Excluded are overtime payments, retrospective pay, pay in advance, leave loadings, severance, termination and redundancy payments, and other payments not related to the reference period.
Weekly total earnings	Weekly total earnings of employees is equal to weekly ordinary time earnings plus weekly overtime earnings.

The ABS publishes a wide range of information on Australia's economic and social conditions. A catalogue of publications and products is available from any of our offices (see below).

INFORMATION CONSULTANCY SERVICES

Information tailored to special needs of clients can be obtained from the Information Consultancy Service available at ABS Offices (see below).

ABS PRODUCTS

A large number of ABS products is available from the ABS Bookshops (see below). The ABS also provides a subscription service – you can telephone the ABS Subscription Service Australia wide toll free on 1300 3663 23.

ELECTRONIC SERVICES

A large range of data is available via on-line services, diskette, magnetic tape, tape cartridge and CD ROM. For more details about our electronic data services, contact any ABS office (see below) or e-mail us at:

- client.services@abs.gov.au

GENERAL SALES AND INQUIRIES

- Sydney 02 9268 4611
 - Melbourne 03 9615 7755
 - Brisbane 07 3222 6351
 - Perth 08 9360 5140
 - Adelaide 08 8237 7100
 - Hobart 03 6222 5800
 - Darwin 08 8943 2111
 - Canberra 06 252 6627
- Information Services, ABS
PO Box 10, Belconnen ACT 2616



2630200008988

ISSN 1301-0592

RRP \$17.00